

■ PRESENTATION

In partnership with the German family-based company AS-Schneider, Georgin markets a broad range of manifolds.

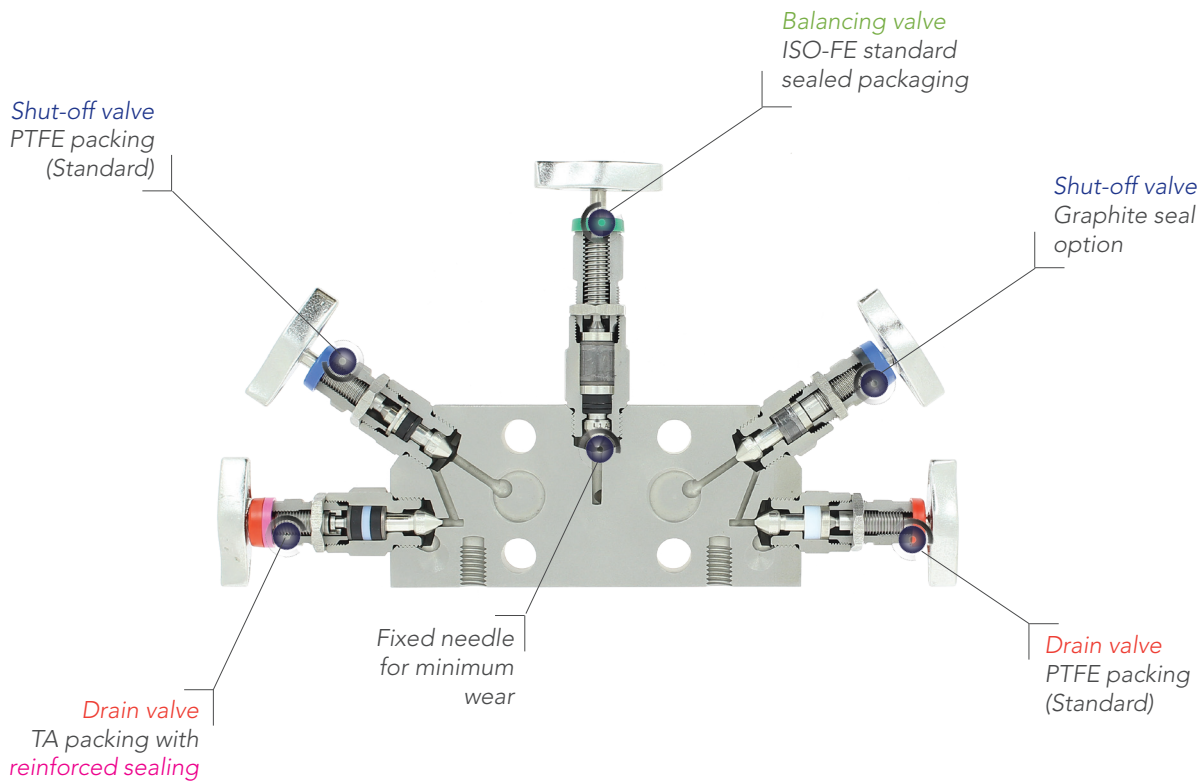
You should choose your 2, 3 or 5 valve manifold according to two essential criteria :

- The design of the valve body that makes installation easier and optimises ease of use by offering ready access to the process in the maintenance phases.
- Consideration of the nature of the fluid, both in the selection of the material of the body (carbon steel, rust-proof or duplex materials, alloys, titanium, etc.) and of the material of the tap seals (PTFE as standard).

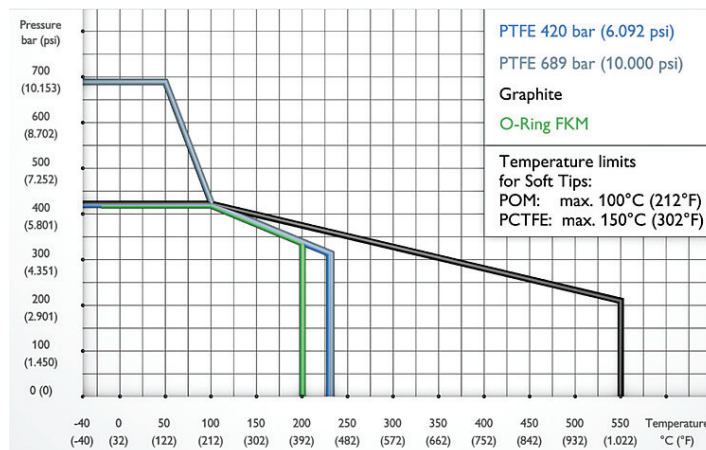
As shown below, the coloured rings identify the insulation, drain and balancing. Optional markings can be added to identify the graphite seal, a PCTFE endpiece, reinforced sealing solutions or equipment that can be used with oxygen.

The modularity of the range also allows for a broad choice of taps that meet normative requirements (emissions of volatiles), process safety requirements (OS&Y valve) or site security (anti-vandalism systems).

Every assembly is tested at 1.5 times the maximum service pressure, as per EN 12266-1.



Temperature and pressure rating



■ MANIFOLDS FOR ONLINE INSTALLATION

These constructions are typically designed for insulation and draining of products mounted online : sticks transmitters, process transmitters for direct mounting, pressure gauges, relative or absolute pressure switches.

The process connections and instrument are in standard in connection 1/2"NPT male or female, drain in 1/4"NPT and PTFE packing.

Options on demand : body material, packing material, specific process connections, cleaning...



A3301-2***		A3302-2***		A3303-2***	
Type	Number of valves	Connection instrument - Process		Material	Options
1 A3301	2 2 valves	1 1/2" NPTF – 1/2" NPTF	2 1/2" NPTF – 1/2" NPTM	0 Stainless steel + PTFE	0 Standard
		5 1/2" NPTM – 1/2" NPTM	6 1/2" NPTM – 1/2" NPTF	G Stainless steel + Graphite	2 O ₂ Cleaning
		Others on demand		Others on demand	
2 A3302	2 2 valves	1 1/2" NPTF – 1/2" NPTF	7 1/2" GF▲ - 1/2" NPTF	0 Stainless steel + PTFE	0 Standard
3 A3303		Others on demand		G Stainless steel + Graphite	2 O ₂ Cleaning
				Others on demand	

▲ Gas 1/2" F turning-sliding

■ MANIFOLDS FOR ONLINE OR REMOTE INSTALLATION

These constructions are typically designed for insulation and draining of products mounted on panel in remote installation : sticks transmitters, transmitters process of direct mounting, pressure gauges, relative or absolute pressure switches.

The A3304 Serie makes it possible to extrude to additional mounting kits.

The connections process and instrument are in standard in connection 1/2"NPT female, drain in 1/4"NPT and PTFE packing.

Options on demand : body material, packing material, specific process connections, cleaning...



A3304-2***		A3304-3***		A3304-5***	
Type	Number of valves	Instrument connection - Process		Material	Options
4 A3304	2 2 valves	1 1/2" NPTF – 1/2" NPTF	3 1/2" GF – 1/2" GF	0 Stainless steel + PTFE	0 Standard
	3 3 valves			G Stainless steel + Graphite	2 O ₂ Cleaning
	5 5 valves			H Hastelloy C276 + PTFE	
				Others on demand	

MANIFOLDS FOR FLANGE MOUNTING

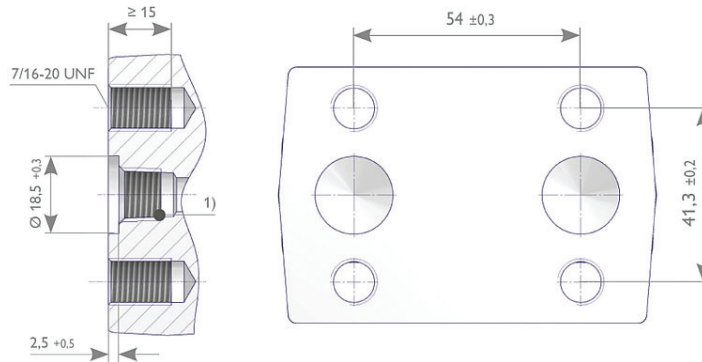
These constructions are designed for insulation and draining of products type flange-mounted : FKC, FKA and FKH models (ProcessX family) but also all the flange transmitters made according to the standards IEC 61518-A, IEC 61518-B or Coplanar (Rosemount).

The connections are in standard of 1/2"NPT male type side process, and flange side instrument, drain in 1/4"NPT and PTFE packing. Options on demand : body material, packing material, specific process connections, cleaning...

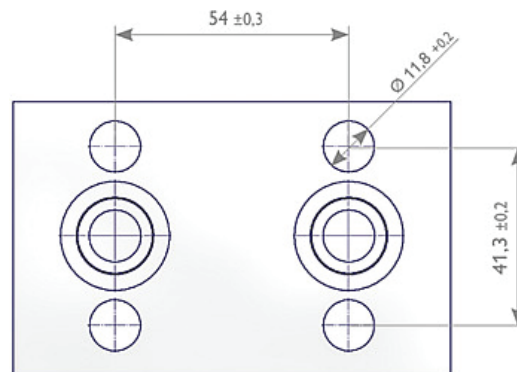
Connection DIN EN 61518 / IEC 61518

The design IEC 61518 require a holding in pression in 413 bar (420 bar in pratice on the constructions AS) and a maximal temperature de 120°C for liquid, gas or vapours. It will therefore be necessary to use the usual accessories of reduction in the temperature. A proper O'ring can be used under more severe fluid conditions.

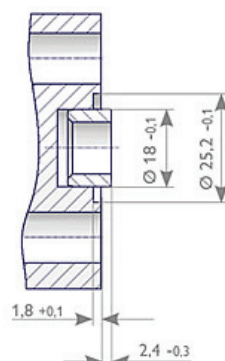
Input connection of manifold under the design DIN_EN_61518/ IEC_61518



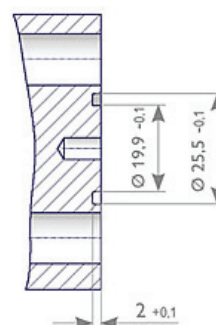
Flange connections to transmitter of construction under DIN_EN_61518/ IEC_61518



A Type



B Type



■ MANIFOLDS FOR FLANGE MOUNTING (CONTINUE)



A33F1-2***



A33F2-2***



A33F2-3***



A33F2-5***



A33F2-5*-DINB**

Construction similar to A33F2-5 design
Feature : drain downward
IEC 61518-A Design



A33F3-5***

Construction similar to design A33F2-5
Feature : drain downward
IEC 61518-B Design

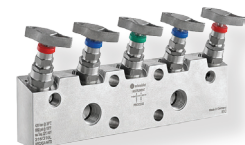


A33F3-5*-DINB**

Compact construction
Model 3 valves without drain in standard
Model 5 valves with drain



A33F4-3***



A33F4-5***

Compact construction
Model 3 valves with drain



A33F4-3*-P**

MANIFOLDS FOR FLANGE MOUNTING (CONTINUE)

Construction with process connection
by the low design IEC 61518-A



A33F5-3***



A33F5-5***

Construction with process connection
by the low design IEC 61518-B



A33F5-5*-DINB**

Construction similar to A33F2-5 design
Feature : drain downward
Applications on Natural Gas
IEC 61518-A Design on standard



A33F6-5***

Type	Number of valves	Instrument connection - Process connection	Material	Options
F1 A33F1	2 2 valves	1 Flange-mounted* – ½" NPTF	0 Stainless steel + PTFE	0 Standard
F2 A33F2	3 3 valves ■	3 Flange-mounted* – ½" GF	G Stainless steel + Graphite	2 O ₂ Cleaned
F3 A33F3	5 5 valves ▲	* under IEC61518-A	H Hastelloy C276 + PTFE	-P Drain ■
F4 A33F4			Others on demand	-DINB IEC 61518-B Design ▲
F5 A33F5				
F6 A33F6				
P1 A33P1				
P2 A33P2				

Note : The standard screw of the A33F1 model at 5 is on type 1 3/4, A33F6 is to type 2"

MANIFOLDS FOR MOUNTING IN A CABINET

These constructions are typically designed for insulation and draining of products type flange-mounted : FKC, FKA and FKH models (ProcessX family) but also all the flange-mounted transmitters made under the standard IEC 61518-A or IEC 61518-B. The feature of the A33A1 models lay in a design adapted to mounting by protection housing against storm damage. The process connections are on standard of 1/2"NPT female type. The connection instrument side is under flange-mounted type, drain in 1/4"NPT and PTFE packing. Options on demand : body material, packing material, specific process connections, cleaning...



A33A1-2***



A33A1-3***



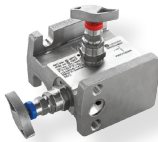
A33A1-5***

■ MANIFOLDS FOR FLANGE TRADITIONAL MOUNTING

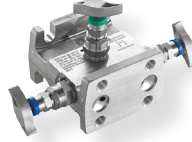
These constructions are typically designed for insulation and draining of products type flange-mounted : FKC, FKA and FKH models (ProcessX family) but also all the flange-mounted transmitters made under IEC 61518-A ou IEC 61518-B standard.

The connections are on standard of type 1/2"NPT female side process, for the A33P2 model, or flange-mounted for the A33P1 model. The connection instrument side is type flange-mounted, drain in 1/4"NPT and PTFE packing.

Options on demand : body material, packing material, specific process connections, cleaning...



A33P1-2**



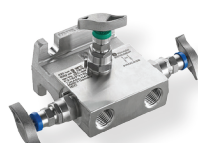
A33P1-3***



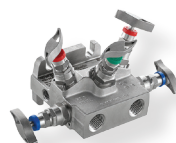
A33P1-5***



A33P2-2***



A33P2-3***

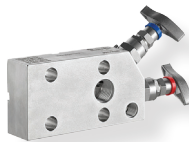


A33P2-5***

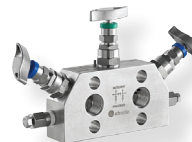
Note : the standard screw of A33P1 models on 2 is of type 1" excepted the 5 valves models on 1"1/2

■ MANIFOLDS FOR MOUNTING COPLANAR TRANSMITTERS

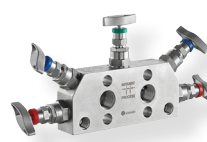
These constructions are typically designed for isolating and draining of products Rosemount 2051/3051 Coplanar type.



A33C1-2***



A33C1-3***



A33C1-5***



A33C2-2***



A33C2-3***



A33C2-5***

■ MANIFOLDS FOR DIFFERENTIAL PRESSURES GAUGES

These constructions are typically designed for insulation and draining of differential pressures gauges.

The process connections are on standard of 1/2"NPT female type. The connection instrument side is of rotary type by sleeve.

Options on demand : body material, packing material, specific process connections, cleaning...



A33M1-3***



A33M1-5***

■ MOUNTING KITS

Each mounting kit is supplied with threaded stretchers, washers, hexagonal nuts, screws and washers of assembly of the distributor if necessary.



A3301-ACC1



A3304-ACC1



A33F0-ACC1



A33F0-ACC3



A33P0-ACC1

Type		Material	Option
A3301-ACC1	For manifold A3301 type	- Carbon steel	-K2 Kit 2"
A3304-ACC1	For manifold A3302, A3303 and A3304 type	X Stainless steel	
A33F0-ACC1	For manifold A33F* and A33M1 except A33F5 type		
A33F0-ACC3	For manifold A33F5 type		
A33P0-ACC1	For manifold A33P* type		

■ SCREWS

Kits of screws for the mounting of manifold on transmitter under DIN EN 61518.

Type		Number of screws and O'rings	Material	O'ring	Length
A3300-H1	Screws 7/16-20 UNF with washers	2 2 screws and 1 O'ring	- Carbon steel	0 PTFE	F38 1"1/2
A3300-H2	Screws M10 with washers	4 4 screws and 2 O'rings	X 304 Stainless steel	G Graphite	F44 1"3/4
			Y 316 Stainless steel		F51 1"3/4
					Others on demand

■ OVAL FLANGE

This accessory makes it possible to adapt a connection DIN EN 61508 on a 1/2"NPT female connection.

Type		Material	Connection	Type	Options
A3300-B	Oval flange	Y 316 Stainless steel	3 1/2"NPT	TD Under DIN EN 61518-A	- Standard
		Others on demand		T4 Under DIN EN 61518-B	B O ² Cleaning
					Others on demand

■ PROCESS SINGLE-FLANGE AND INSTRUMENT AND BLOCK WITH DUAL-ISOLATION AND DRAIN



A3300-M

A3300-DBB

